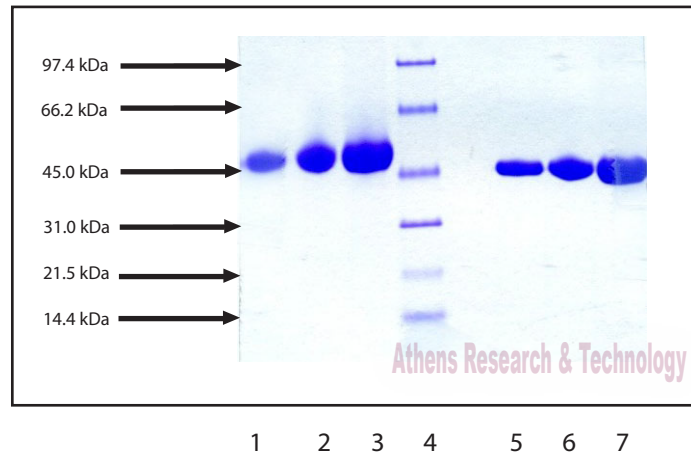


Athens Research & Technology

110 Trans Tech Drive Athens, GA 30601 USA
PHONE: 706-546-0207 • FAX: 706-546-7395 • EMAIL: ARTBIO@ATHENSRESEARCH.COM

Gel Scan of Representative Lot

GC Globulin, Human Plasma
ART Catalog No. 16-16-070307



SDS-PAGE:

4-12% Bis-Tris-HCl NuPAGE gel

1. GC Globulin - 5 µg (reduced / heated)
2. GC Globulin - 10 µg (reduced / heated)
3. GC Globulin - 20 µg (reduced / heated)
4. LMW Standard (BIO-RAD Cat. No. 161-0304)
5. GC Globulin - 5 µg (non-reduced / no heat)
6. GC Globulin - 10 µg (non-reduced / no heat)
7. GC Globulin - 20 µg (non-reduced / no heat)

Virginia B. Patel PhD