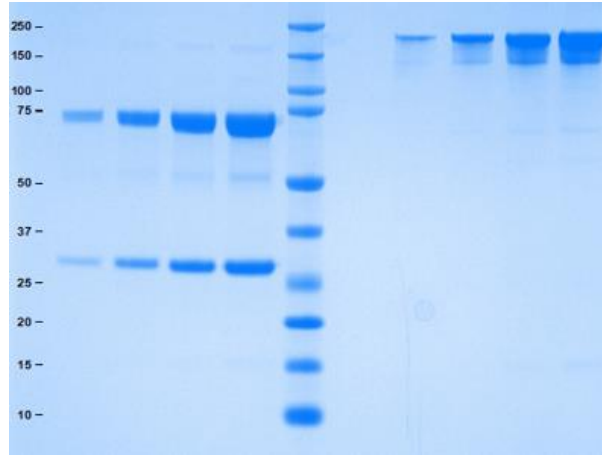


Gel Scan of Representative Lot Immunoglobulin E (IgE), Kappa

ART Catalog No. 16-16-090705-M-Kappa



SDS-PAGE

4-12% Bis-Tris gel, 1x MES

1. Immunoglobulin E (IgE), Kappa 1 µg (Heated/Reduced)
2. Immunoglobulin E (IgE), Kappa 3 µg (Heated/Reduced)
3. Immunoglobulin E (IgE), Kappa 5 µg (Heated/Reduced)
4. Immunoglobulin E (IgE), Kappa 10 µg (Heated/Reduced)
5. Standard
6. Blank
7. Immunoglobulin E (IgE), Kappa 1 µg (Not Heated/Non-Reduced)
8. Immunoglobulin E (IgE), Kappa 3 µg (Not Heated/Non-Reduced)
9. Immunoglobulin E (IgE), Kappa 5 µg (Not Heated/Non-Reduced)
10. Immunoglobulin E (IgE), Kappa 10 µg (Not Heated/Non-Reduced)

Protein Determination:

Extinction Coefficient (E) = 1.46 (0.1% at 280 nm,
1 cm pathway)

Molecular Weight:

190,000 Da

Physical Specifications:

Form: Frozen

Purity: ≥ 95% by SDS-PAGE

Considerations:

Storage Conditions: ≤ -20 °C

Stability: > 1 year

Buffer:

Frozen in 15 mM potassium phosphate, pH 7.4,
with 150 mM NaCl and 0.05% sodium azide.

Product Datasheet

| | |
|-------------------------------|--|
| Product: | Immunoglobulin E (IgE), Kappa |
| Catalog #: | 16-16-090705-M-Kappa |
| Form: | Frozen |
| Available Packaging: | 100 µg. Larger aliquots are available upon request. |
| Buffer: | Frozen in 15 mM potassium phosphate, pH 7.4, with 150 mM NaCl and 0.05% NaN ₃ . |
| Purity: | ≥ 95% by SDS-PAGE |
| Molecular Weight: | 190,000 Da |
| Protein Determination: | Extinction Coefficient (E) = 1.46 (0.1% at 280 nm, 1 cm pathway) |
| Storage/Handling: | ≤ -20 °C |
| Stability: | > 1 year |
| Source: | Human Myeloma Plasma, Kappa |
| Testing: | Donor material is obtained from suppliers that perform a comprehensive infectious disease screening panel. This material is prepared using donor units that have been screened individually and found non-reactive for HIV-1/2, Hepatitis B surface antigen (HBsAg), and Hepatitis C (HCV) using validated methods. Detailed testing records are available upon request. |

Product Link: <https://www.athensresearch.com/products/all/immunoglobulin-e-ige-human-myeloma-plasma-kappa>

FOR RESEARCH OR FURTHER MANUFACTURING USE ONLY