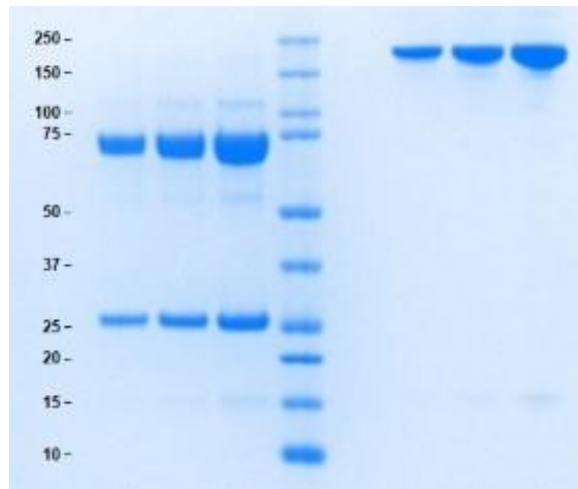


Gel Scan of Representative Lot Immunoglobulin E (IgE)

ART Catalog No. 16-16-090705



SDS-PAGE

4-12% Bis-Tris gel, 1x MES

1. Immunoglobulin E (IgE) 5 µg (Heated/Reduced)
2. Immunoglobulin E (IgE) 10 µg (Heated/Reduced)
3. Immunoglobulin E (IgE) 20 µg (Heated/Reduced)
4. Standard
5. Blank
6. Immunoglobulin E (IgE) 5 µg (Not Heated/Non-Reduced)
7. Immunoglobulin E (IgE) 10 µg (Not Heated/Non-Reduced)
8. Immunoglobulin E (IgE) 20 µg (Not Heated/Non-Reduced)

Protein Determination:

Extinction Coefficient (E) = 1.33 (0.1% at 280 nm,
1 cm pathway)

Considerations:

Storage Conditions: ≤ -20 °C
Stability: > 1 year

Molecular Weight:

200,000 Da

Buffer:

Frozen in 100 mM Tris, pH 7.5, with 200 mM NaCl
and 0.05% sodium azide

Physical Specifications:

Form: Frozen

Purity: ≥ 95% by SDS-PAGE

Product Datasheet

Product:	Immunoglobulin E (IgE)
Catalog #:	16-16-090705
Form:	Frozen
Available Packaging:	100 µg and 1 mg. Larger aliquots are available upon request.
Buffer:	Frozen in 100 mM Tris, pH 7.5, with 200 mM NaCl and 0.05% NaN ₃
Purity:	≥ 95% by SDS-PAGE
Molecular Weight:	200,000 Da
Protein Determination:	Extinction Coefficient (E) = 1.33 (0.1% at 280 nm, 1 cm pathway)
Storage/Handling:	≤ -20 °C
Stability:	> 1 year
Source:	Human Plasma
Testing:	Donor material is obtained from suppliers that perform a comprehensive infectious disease screening panel. Each unit of plasma is tested by the supplier and found non-reactive for HIV-1/2, Hepatitis B surface antigen (HBsAg), Hepatitis C (HCV), Hepatitis A (HAV), and syphilis (RPR). Documentation of testing is maintained and is available upon request.

Product Link: <https://www.athensresearch.com/products/all/immunoglobulin-e-human-plasma-ige>

FOR RESEARCH OR FURTHER MANUFACTURING USE ONLY