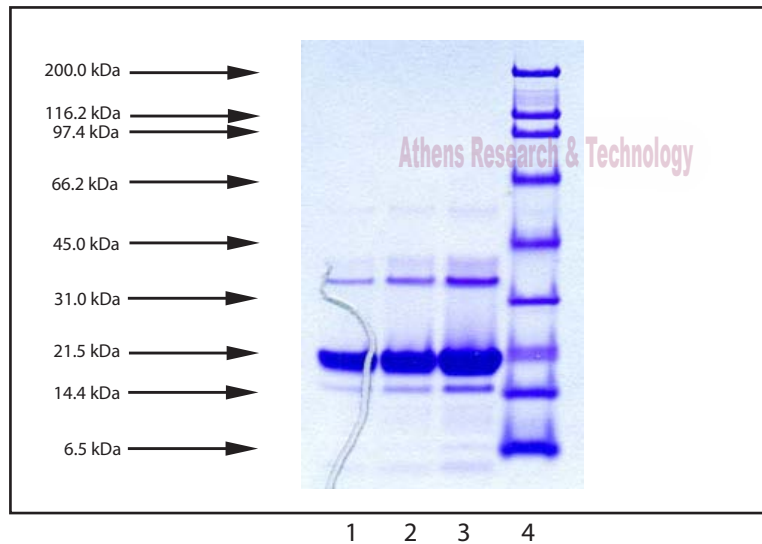


Athens Research & Technology

110 Trans Tech Drive Athens, GA 30601 USA
PHONE: 706-546-0207 • FAX: 706-546-7395 • EMAIL: ARTBIO@ATHENSRESEARCH.COM
www.athensresearch.com

Gel Scan of Representative Lot

Superoxide Dismutase, Human Erythrocyte
ART Catalog No. 16-05-191504



SDS-PAGE:

4-12% Bis-Tris-HCl NuPAGE gel

1. SOD - 5 µg (reduced / heated)
2. SOD - 10 µg (reduced / heated)
3. SOD - 20 µg (reduced / heated)
4. BMW Standard (BIO-RAD Cat. No. 161-0317)

Molecular Weight: 16,000 Daltons

Protein Determination:

Extinction Coefficient (E) $\frac{0.1\% \text{ at } 265\text{nm}}{1\text{cm pathway}} = 0.584$

Physical Specifications:

Lyophilized
Purity: $\geq 95\%$ by SDS-PAGE

Considerations:

Storage Conditions: $\leq -20^\circ\text{C}$ or lower

Stability > 1 year

Buffer: 0.1M KH_2PO_4 , pH 7.5

Virginia B. Patel PhD

Athens Research & Technology

110 Trans Tech Drive Athens, GA 30601 USA
PHONE: 706-546-0207 • FAX: 706-546-7395 • EMAIL: ARTBIO@ATHENSRESEARCH.COM
www.athensresearch.com

Product Datasheet

Product:	Superoxide Dismutase, Human Erythrocyte
Catalog Number:	16-05-191504
Description:	Lyophilized
Buffer:	0.1 M potassium phosphate, pH 7.5
Purity:	>=95% by SDS-PAGE
Activity:	Greater than 50,000 units per mg protein. One unit is defined as the amount to the amount of enzyme which will inhibit by 50% the formation of a colorimetric indicator by O ₂ -in an xanthine/xanthine oxidase coupled system.
Molecular Weight:	MW 16,000 (reduced/heated)
Protein Determination:	Extinction Coefficient (E) $\frac{0.1\% \text{ at } 280\text{nm}}{1\text{cm pathway}} = 0.584$
Storage:	-20° C
Stability:	> 1 Year
Available Packaging:	100 ug per vial
Source:	Human Erythrocyte from whole blood
Testing:	Shown to be non reactive for HBsAg, anti-HCV, anti-HBc, and negative for anti-HIV 1 & 2 by FDA approved tests.

**Athens Research & Technology products are laboratory reagents and are not to be administered to humans or used for any drug purpose.
For research use or for use in further manufacturing.**