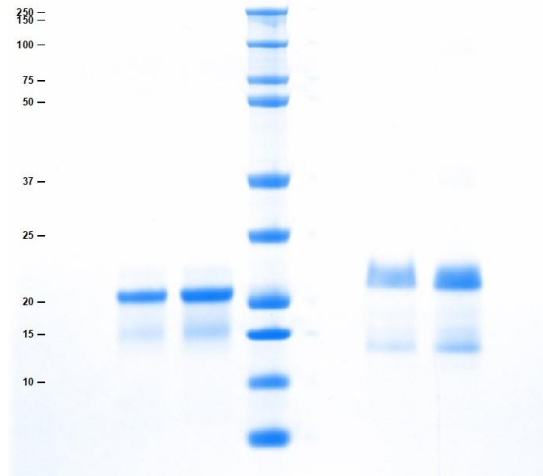


Gel Scan of Representative Lot Cathepsin H

ART Catalog No. 16-12-030108



SDS-PAGE

4-12% Bis-Tris gel, 1x MES

1. Cathepsin H 4 µg (Heated/Reduced)
2. Cathepsin H 7 µg (Heated/Reduced)
3. Standard
4. Blank
5. Cathepsin H 4 µg (Not Heated/Non-Reduced)
6. Cathepsin H 7 µg (Not Heated/Non-Reduced)

Protein Determination:

Extinction Coefficient (E) = 1.22 (0.1% at 280 nm,
1 cm pathway)

Molecular Weight:

28,000 Da

Physical Specifications:

Form: Frozen

Purity: ≥ 90% by SDS-PAGE

Considerations:

Storage Conditions: ≤ -70 °C

Stability: > 1 year

Buffer:

Frozen in 20 mM sodium acetate, pH 4.5, with 1
mM EDTA and 100 mM NaCl

Product Datasheet

Product:	Cathepsin H
Catalog #:	16-12-030108
Form:	Frozen
Available Packaging:	25 and 100 µg. Larger aliquots are available upon request.
Buffer:	Frozen in 20 mM sodium acetate, pH 4.5, with 1 mM EDTA and 100 mM NaCl
Purity:	≥ 90% by SDS-PAGE
Molecular Weight:	28,000 Da
Protein Determination:	Extinction Coefficient (E) = 1.22 (0.1% at 280 nm, 1 cm pathway)
Activity:	> 1 unit/mg protein. One unit is defined as the amount of enzyme that hydrolyzes 1 µmol of L-arginine-beta-naphthylamide per minute at 40 °C using 75 mM potassium phosphate, pH 6.8, with 1 mM EDTA and 3 mM cysteine as the activation buffer.
Storage/Handling:	≤ -70 °C
Stability:	> 1 year
Source:	Human Tissue
Testing:	Donor material is obtained from suppliers that perform a comprehensive infectious disease screening panel. Donors are screened by the supplier and confirmed negative for HIV-1/2, Hepatitis B (HBV), and Hepatitis C (HCV). Donor eligibility and testing practices are documented and traceable.

Product Link: <https://www.athensresearch.com/products/all/cathepsin-h-human-liver>

FOR RESEARCH OR FURTHER MANUFACTURING USE ONLY