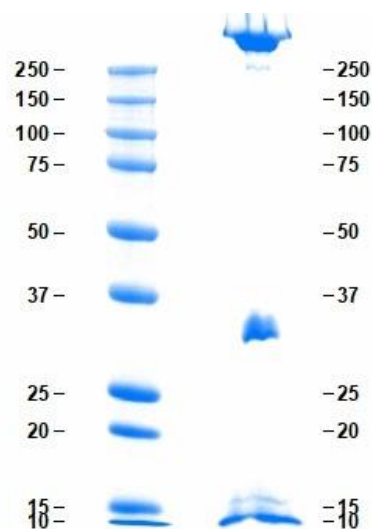


## Gel Scan of Representative Lot

### Lipoproteins, Very Low Density, Suitable for Cell Culture

ART Catalog No. 12-16-221204-TC



#### SDS-PAGE

12% Bis-Tris gel, 1x MES

1. Standard
2. Blank
3. Lipoproteins, Very Low Density, Suitable for Cell Culture 10 µg (Heated/Reduced)

#### Protein Determination:

Modified Lowry based on BSA as standard

#### Considerations:

Storage Conditions: 2 - 6 °C; Do not freeze; Store away from light

Stability: Open under a laminar flow hood; ≤ 7 days once opened.

#### Molecular Weight:

10,000,000 – 80,000,000 Da

#### Buffer:

150 mM NaCl, pH 7.4, and 0.01% EDTA.

#### Physical Specifications:

Form: Liquid

Purity: A single arc by IEP against antisera to whole human serum. Essentially free of other plasma lipoproteins and chylomicrons as determined by electrophoresis using a SPIFE Vis Cholesterol gel kit for lipids and Coomassie Blue for proteins. ≥ 95% of the total

#### Endotoxin Level:

≤ 10 EU/mg measured by LAL Endoclot Test

#### Sterility Testing:

Using turbidity growth/no growth as the indicator Thioglycollate broth (THIO) for yeast and mold growth

Tryptic soy broth (TSB) for bacterial growth

## Product Datasheet

<b>Product:</b>	<b>Lipoproteins, Very Low Density, Suitable for Cell Culture</b>
<b>Catalog #:</b>	12-16-221204-TC
<b>Form:</b>	Liquid
<b>Available Packaging:</b>	1 mg and 5 mg. Large aliquots are available upon request.
<b>Buffer:</b>	150 mM NaCl, pH 7.4, and 0.01% EDTA.
<b>Purity:</b>	A single arc by IEP against antisera to whole human serum. Essentially free of other plasma lipoproteins and chylomicrons as determined by electrophoresis using a SPIFE Vis Cholesterol gel kit for lipids and Coomassie Blue for proteins. $\geq 95\%$ of the total lipoprotein content by electrophoresis.
<b>Molecular Weight:</b>	10,000,000 – 80,000,000 Da
<b>Density:</b>	0.950 – 1.006 g/mL
<b>Composition:</b>	88 – 95% Lipid; 5 – 12% protein
<b>Endotoxin Level:</b>	$\leq 10$ EU/mg measured by LAL Endoclot Test
<b>Sterility Testing:</b>	Using turbidity growth/no growth as the indicator Thioglycollate broth (THIO) for yeast and mold growth Tryptic soy broth (TSB) for bacterial growth
<b>Protein Determination:</b>	Modified Lowry based on BSA as standard
<b>Storage/Handling:</b>	2 - 6 °C; Do not freeze; Store away from light
<b>Stability:</b>	Open under a laminar flow hood; $\leq 7$ days once opened.
<b>Source:</b>	Human Plasma
<b>Testing:</b>	Donor material is obtained from suppliers that perform a comprehensive infectious disease screening panel. Each unit of plasma is tested by the supplier and found non-reactive for HIV-1/2, Hepatitis B surface antigen (HBsAg), Hepatitis C (HCV), Hepatitis A (HAV), and syphilis (RPR). Documentation of testing is maintained and is available upon request.

**Product Link:** <https://www.athensresearch.com/products/all/lipoproteins-very-low-density-human-plasma-suitable-for-cell-culture>

**FOR RESEARCH OR FURTHER MANUFACTURING USE ONLY**

